

# CAEAres™

## Installer for NIBP Fix

**905K640022**  
**February 2020**

**PROPRIETARY NOTICE:** This document, including the information contained herein, is confidential and/or proprietary to CAE Inc., and shall not be reproduced or disclosed in whole or in part, or used for any purpose whatsoever without the prior written authorization of CAE Inc.

Your worldwide  
training partner  
of choice



## ***Trademark Information***

---

Trademarks and/or registered trademarks of CAE Inc. and/or its affiliates include but are not limited to Apollo, Ares, Athena, BabySIM, Caesar, CathLabVR, EndoVR, HPS Human Patient Simulator, iStan, Juno, LapVR, Lucina, METIman, NeuroVR, PediaSIM, Vimedix, VimedixAR and Vivo. All other brands and product names are trademarks or registered trademarks of their respective owners. All logos, tradenames and trademarks referred to and used herein remain the property of their respective owners and may not be used, changed, copied, altered, or quoted without the written consent of the respective owner. All rights reserved.

# INSTALLING FIRMWARE UPDATES

## Introduction

Follow these instructions to install firmware updates into the above listed patient simulators.

## Download Update File/s

Firmware updates are available periodically from the CAE website and may be downloaded using any Windows computer with an Internet connection.

Software Updates: <https://caehealthcare.com/support/software-updates>

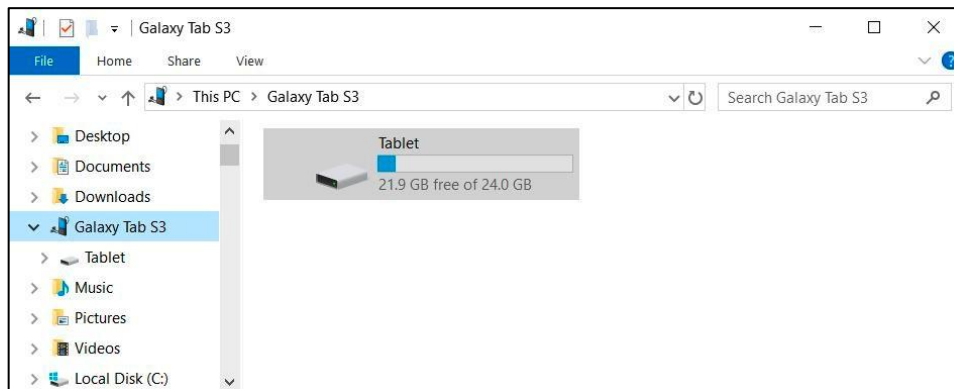
The update files will be in the format of: "Ares\_NIBPFix\_vX.msu". Once the file has been downloaded, transfer to the Samsung tablet via the USB-C interface cable provided with the tablet.

## Transfer a System Update to the Samsung Tablet:

1. Connect the Samsung tablet to the Windows computer via the USB-C interface cable.

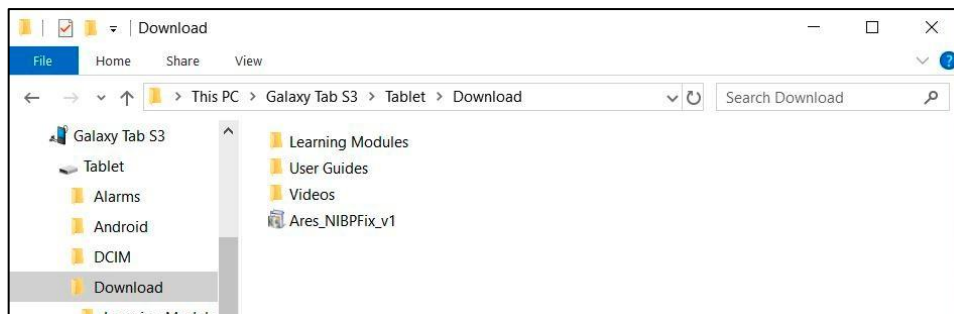
The “Allow access to device data” dialog box appears on the tablet.

2. Tap **Allow** to access the Samsung tablet.
3. Open Windows Explorer and locate the Galaxy Tab S3 folder.



**Figure 1**

4. Locate the tablet **Download** folder and move the Maestro installer “Ares\_NIBPFix\_vX.msu” from the computer to the Download folder on the Samsung tablet.



**Figure 2**

5. Once the file is transferred to the tablet, disconnect cable from computer.

## Install a Firmware Update in Maestro:

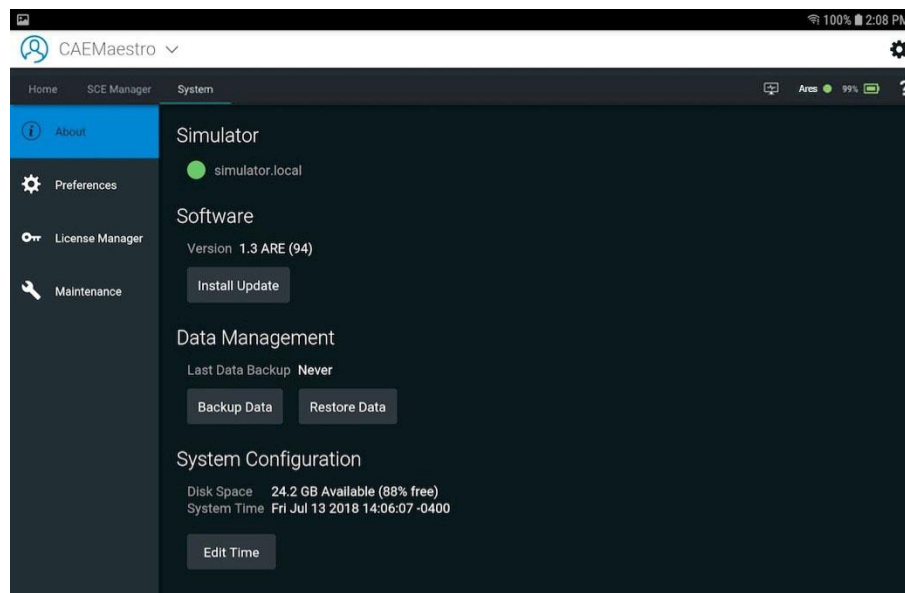
1. Power on the simulator.

The manikin says “Hello.”

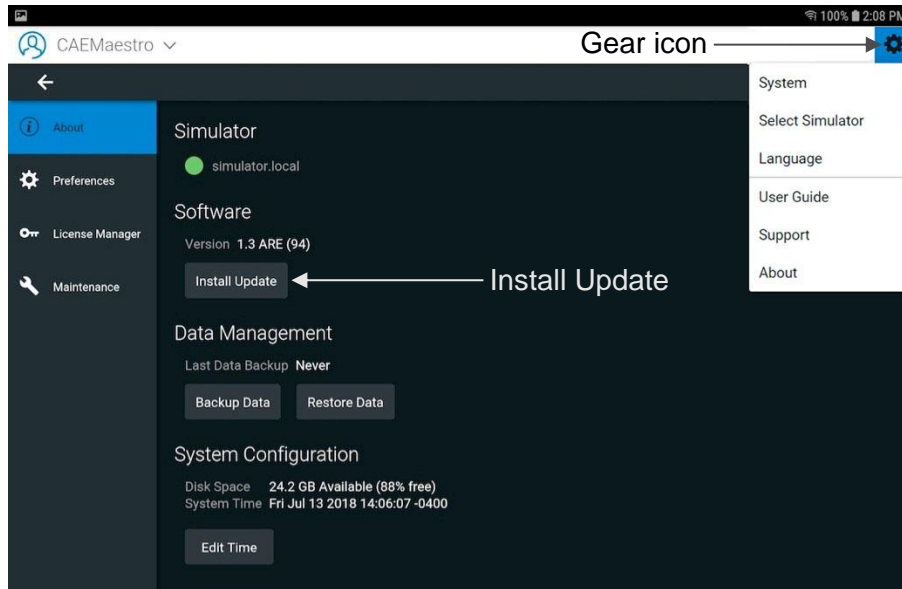
2. Power on the Tablet and verify WiFi connection.
3. Tap the **Maestro Application** icon.

After the Home page appears, log in to Maestro. Use **admin** for username and the password.

**Note:** Before initiating the update, plug the tablet into a power source and confirm the battery level is greater than 80%. The battery status is displayed in the upper right corner.



4. Tap on the **Gear** icon. From the drop-down menu, select **System**.

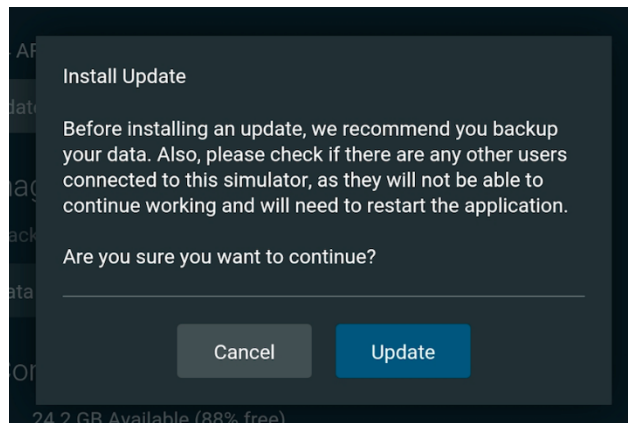


**Figure 3**

5. Tap **Install Update**.

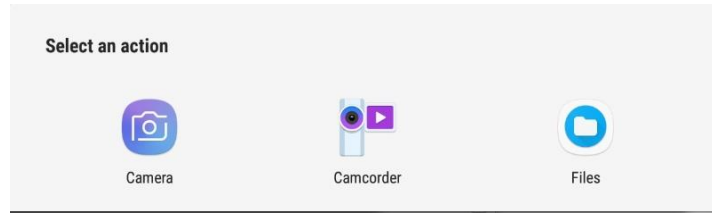
A file backup reminder message appears.

6. Tap **Cancel** to return to the previous window and back up, or tap **Update** to proceed with the update.



**Figure 4**

The **Select an action** window appears.



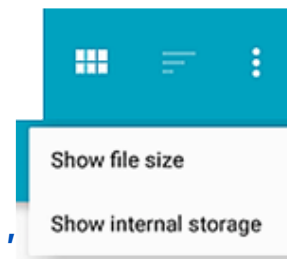
**Figure 5**

7. Tap the **Files** icon.

A new window opens.

8. Tap the three vertical dots in the upper right corner of the screen.

9. From the drop-down menu, tap **Show internal storage**.

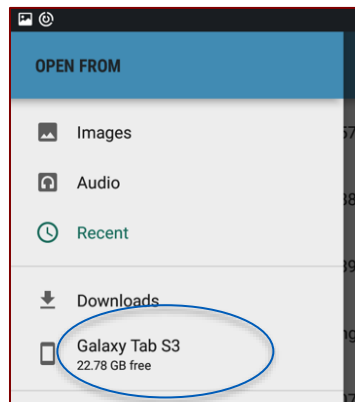


**Figure 6**


**Note:** If the dialog box with **Hide internal storage** appears, close the menu by tapping anywhere outside of the box.

10. Tap the **3 horizontal line icon**  in the upper left corner of the screen.

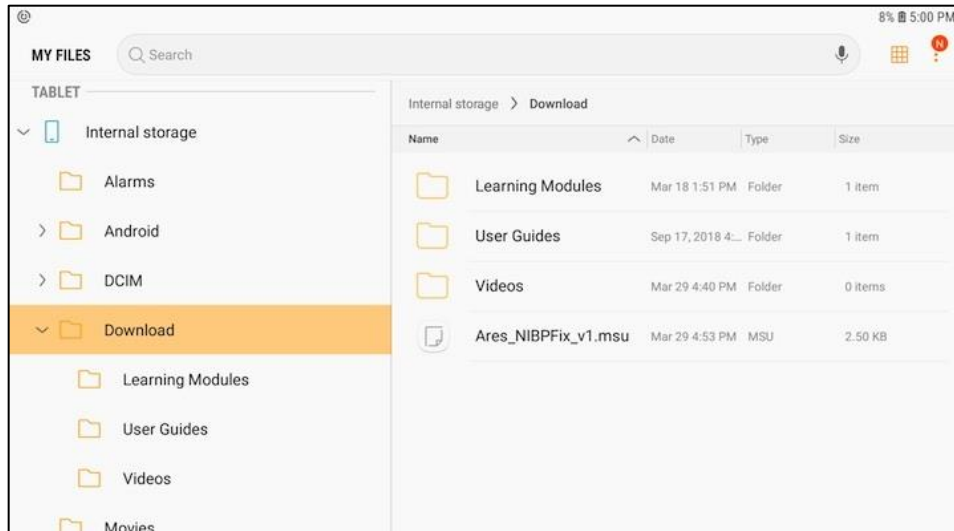
11. Tap **Galaxy Tab S3**.



**Figure 7**

**Note:** Change the view of this folder from Images to List view by selecting the List icon  in the upper right corner.

12. Locate and tap the Download folder.
13. Locate the “Ares\_NIBPFix\_vX.msu” installer.

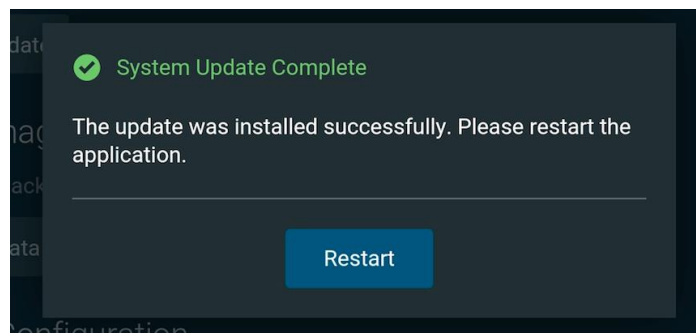


**Figure 8**

14. Tap the “Ares\_NIBPFix\_vX.msu” update file to select and begin update.

The display darkens and the **“Software Update in Progress”** message appears as the file is transferred to the manikin and installed.

Once the update is installed, a System Update Complete message appears.



**Figure 9**



15. Tap the **Restart** button on the tablet screen.

**Note:** If Maestro does not start, exit the application completely. From the tablet Home screen, tap the **Maestro** icon.

# CUSTOMER SERVICE

For more information about CAE products, contact your regional sales manager or the CAE distributor in your country, or visit [caehealthcare.com](http://caehealthcare.com).  
Tel +1 941-377-5562 or 866-233-6384

For customer service, please contact CAE.

### **Customer Service Headquarters – United States**

Monday - Friday from 7:00 a.m. to 6:00 p.m. ET  
Phone 1-866-462-7920  
Email: [srqcustomerservice@cae.com](mailto:srqcustomerservice@cae.com)

### **Customer Service – Canada**

Monday - Friday from 8:00 a.m. to 5:00 p.m. ET  
Phone 1-877-223-6273  
Email: [srqcansupport@cae.com](mailto:srqcansupport@cae.com)

### **Customer Service – Europe, Middle East and Africa**

Monday - Friday from 8:00 a.m. to 5:00 p.m. CET  
Phone +49 (0) 6131 4950354  
Email: [international.service@cae.com](mailto:international.service@cae.com)

### **Customer Service – United Kingdom and Ireland**

Monday - Friday from 9:00 a.m. to 5:00 p.m. GMT  
Phone +44 (0)800-917-1851  
Email: [uk.service@cae.com](mailto:uk.service@cae.com)

### **Customer Service – Latin America**

Monday - Friday from 9:00 a.m. to 5:00 p.m. BRT / BRST  
Phone +55 11 5069-1510  
Email: [la.service@cae.com](mailto:la.service@cae.com)

### **Customer Service – Asia Pacific**

Monday - Friday from 8:00 a.m. to 5:00 p.m. CET  
Phone +49 (0) 6131 4950354  
Email: [ap.service@cae.com](mailto:ap.service@cae.com)