

# MÜSE VIEWER INSTALLATION GUIDE

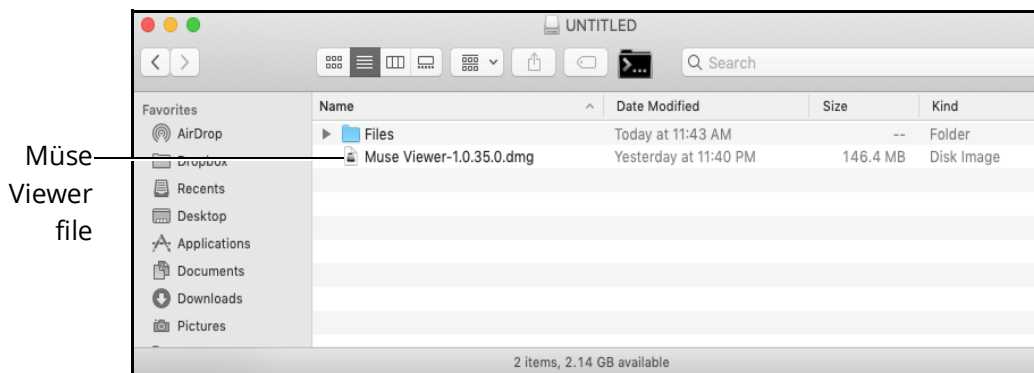
As a solution for the discontinuation of Flash Player, CAE Healthcare has created a customized viewer for the Müse software. Before you begin the installation process:

- Identify the type of device (Mac or Windows) on which you intend to install the Müse Viewer application.
- Download the Müse Viewer application appropriate for your computer platform from the CAE Healthcare website (<https://caehealthcare.com/muse-viewer>).
- If installing onto an Instructor Workstation computer, copy and save the downloaded file onto a USB key.

## Installing on Mac Computers

To install the Müse Viewer on Mac computers:

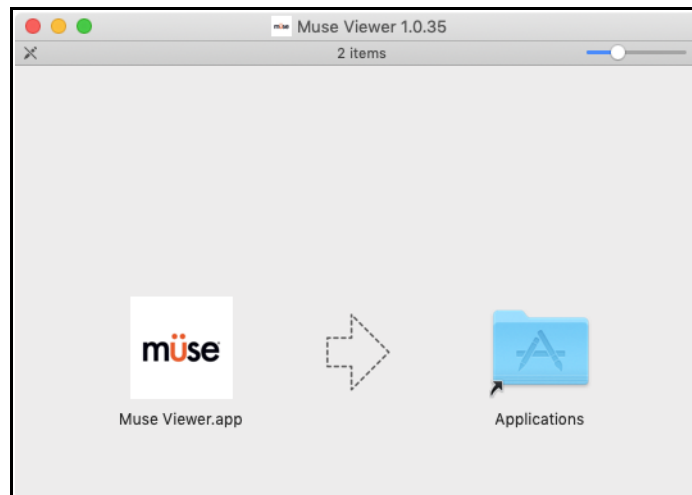
1. Ensure you are logged into an Administrator account. On a personal machine, this will probably be your personal account. On a CAE-supplied machine, this account may be named "METI Administrator", or "CAE Administrator."
2. Open Downloads folder or folder where Müse Viewer is stored (if using USB key, open USB folder).



**Müse Viewer File**

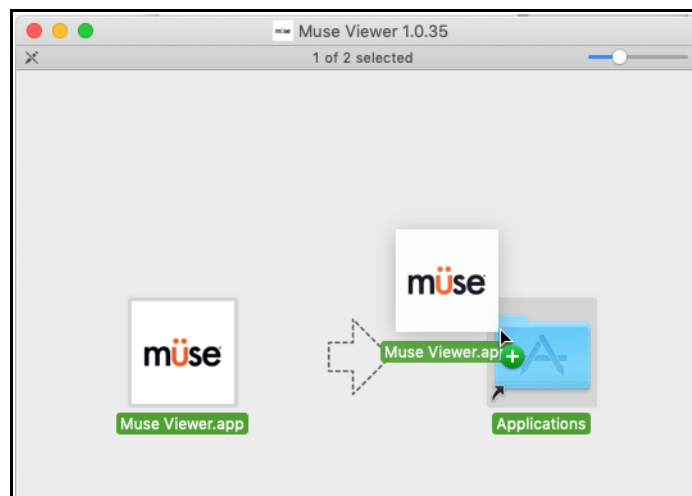
3. Double-click the *Müse Viewer-X.X.X.X (.dmg)* file.

The Müse Viewer application appears in the disk image screen.



***Disk Image Screen***

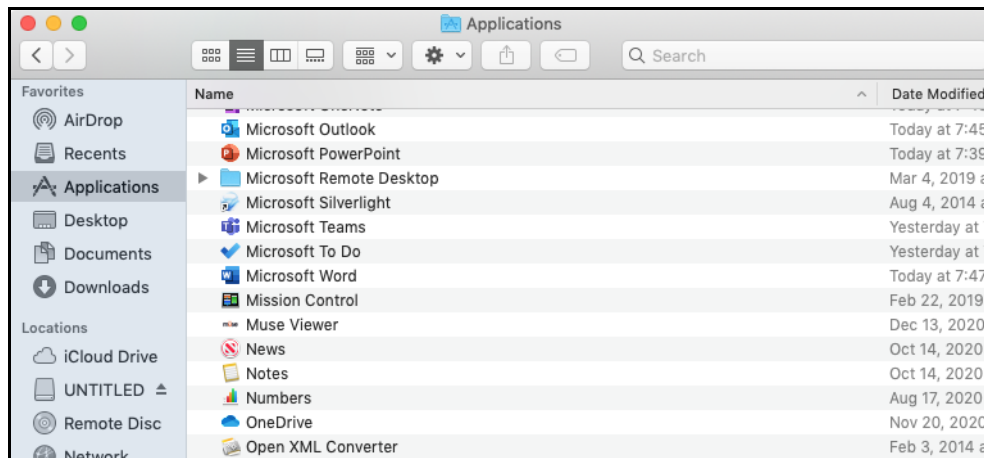
4. In the disk image screen, drag the Müse Viewer application to the Applications folder.



***Müse Viewer Application Transfer***

5. Log out of the Administrator account and log into your standard User Account.

- Use the Finder to open the Applications folder.



**Müse Viewer File in Applications Folder**

- From the Applications folder, drag the Müse Viewer file into the macOS dock.

The file appears in the macOS dock.



**Müse Viewer File Moved in macOS Dock**

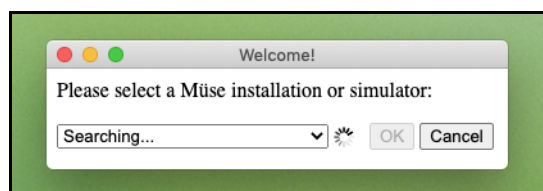
## Launching on Mac Computer

**Note:** If you are installing Müse Viewer on an Instructor Workstation, please ensure the simulator is powered on, and that the Instructor Workstation is connected to the simulator's WiFi hotspot before you begin. For more information about this process, please see your simulator's user guide.

To launch the Müse Viewer on a Mac computer:

- Click the **Müse Viewer** icon in the macOS Dock.

The Müse Viewer Welcome window appears.



**Müse Viewer Welcome Window**

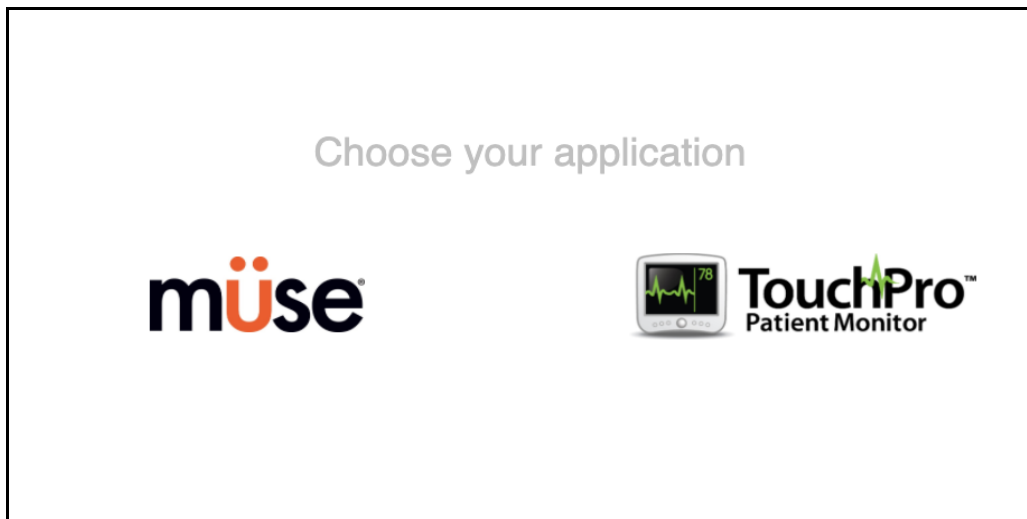
- Wait while the Müse Viewer application scans the network for available Müse installations.

3. Select a Müse installation (it will appear as an IP address) from the drop-down menu and click **OK**.

For Müse SCE Development or for an Instructor Workstation for the HPS, PediaSIM, BabySIM, or iStan simulator types, select "This Computer."

For an Instructor Workstation for METIman, Caesar, Apollo, Lucina or Athena simulator types, select the IP address that corresponds to your simulator's IP address. Typically, only one will appear in the drop-down.

The Müse Applications screen appears.



***Müse Applications Screen***

To launch a secondary application (TouchPro Patient Monitor or TouchPro CTG):

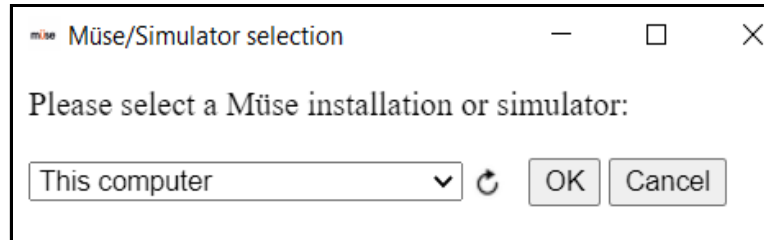
1. Navigate to the Müse Viewer Menu bar and from the File drop-down menu, select **New Window**.

The Müse Applications screen appears.

To change installations:

1. Navigate to the Müse Viewer Menu bar and from the drop-down menu, select **Preferences**.

The Müse/Simulator Selection screen appears.



**Müse/Simulator Selection Window**

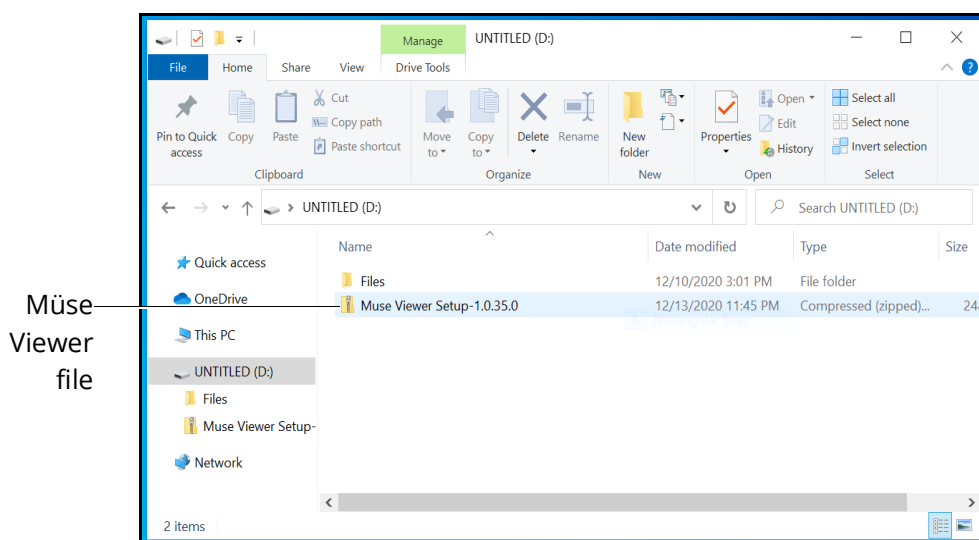
**Note:** Select the curved arrow to refresh the drop-down menu list. By default, this list is only populated with previously connected simulators.

2. Select a different installation from the drop-down menu and click **OK**.

## Installing on Windows Computer

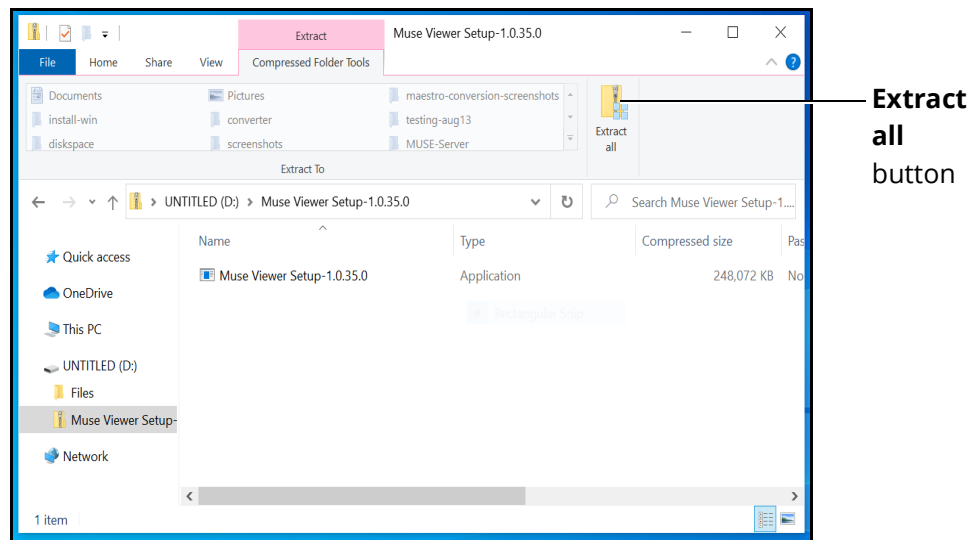
To install the Müse Viewer on Windows computers:

1. Open Downloads folder or folder where Müse Viewer is stored (if using USB key, open USB folder).



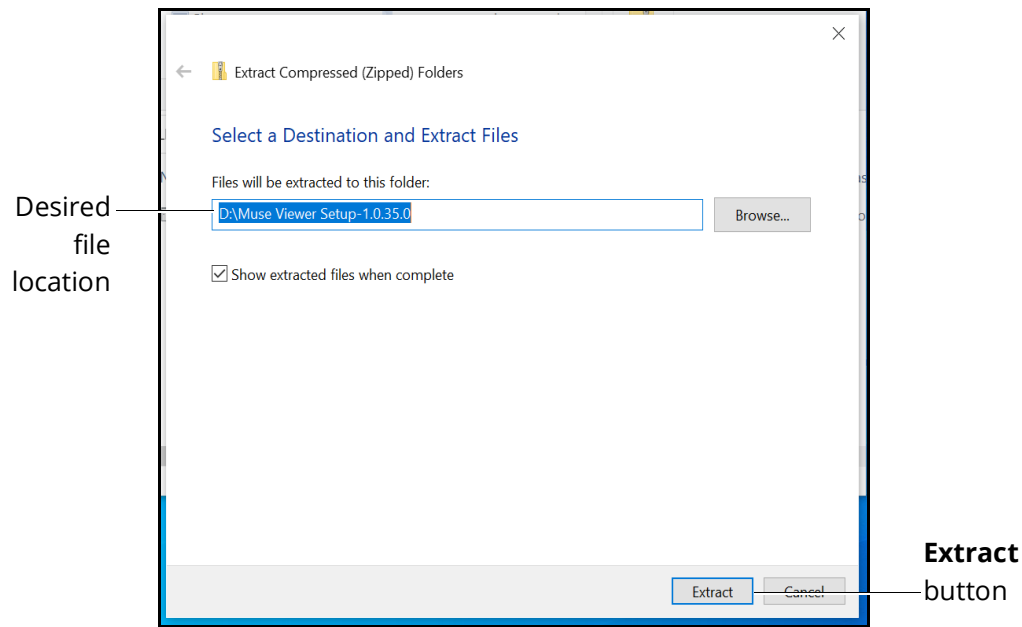
**Müse Viewer File in File Folder**

2. Double-click the *Müse Viewer Setup-X.X.X.X* zip file, then from the toolbar, click **Extract All**.



***Müse Viewer File in File Folder***

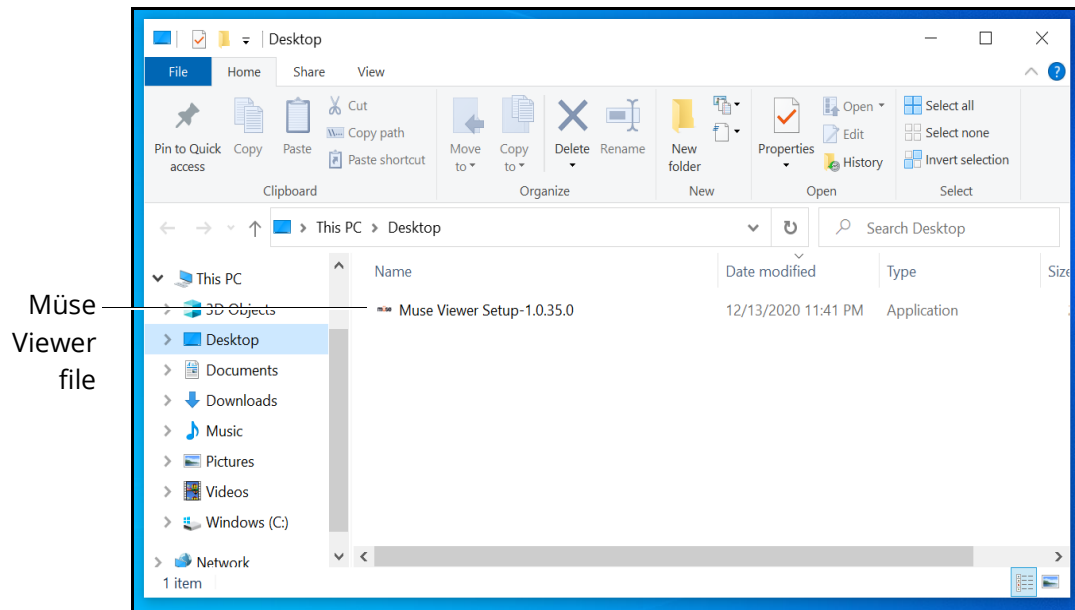
The extract compressed folders window appears.



***Extract Compressed Folders Window***

3. Ensure the file path is directed to a file folder on the Desktop.

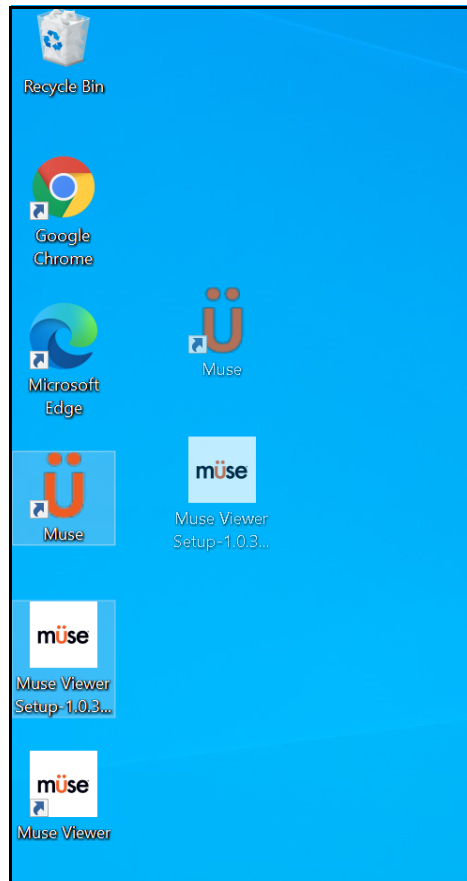
The file folder appears in the location.



***Müse Viewer File in File Folder***

4. Double-click the *Müse Viewer Setup-X.X.X.X (.exe)* file.
5. Wait while the application installs.
6. Once completed, the Müse Viewer shortcut appears on the Desktop.

7. From the Desktop, drag the Müse Viewer Setup-X.X.X.X file and the Müse shortcut to the Recycle Bin.



*Windows Desktop*

## Launching on Windows Computer

**Note:** If you are installing Müse Viewer on an Instructor Workstation, please ensure the simulator is powered on, and that the Instructor Workstation is connected to the simulator's WiFi hotspot before you begin. For more information about this process, please see your simulator's user guide.

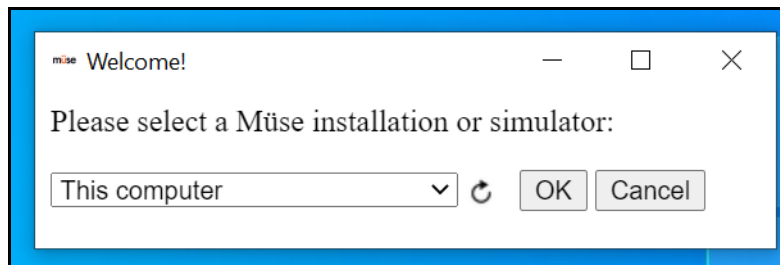
To launch the Müse Viewer on a Windows device:

1. Double-click the **Müse Viewer** shortcut on the Desktop.



*Müse Viewer File on Desktop*

The Müse Viewer Welcome window appears.



***Müse Viewer Welcome Window***

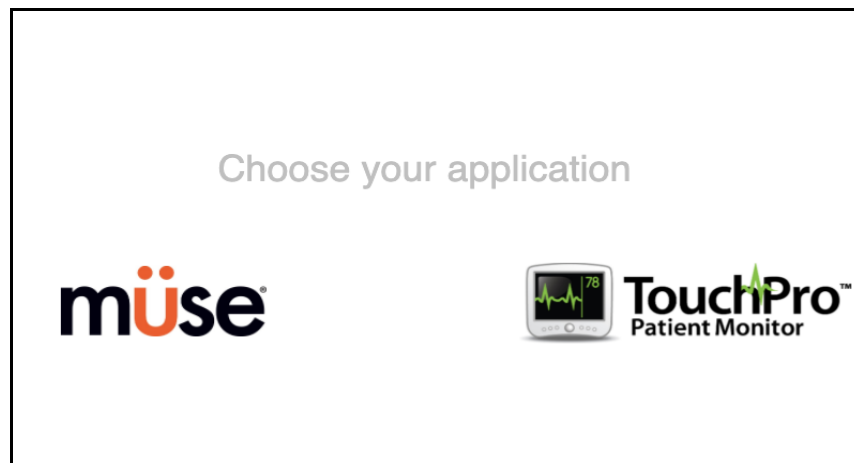
2. Wait while the Müse Viewer application scans the network for available Müse installations.
3. Select a Müse installation (it will appear as an IP address) from the drop-down menu.

For Müse SCE Development or for an Instructor Workstation for the HPS, PediaSIM, BabySIM, or iStan simulator types, select "This Computer".

For an Instructor Workstation for METIman, Caesar, Apollo, Lucina or Athena simulator types, select the IP address that corresponds to your simulator's IP address.

4. Click **OK**.

The Müse Applications screen appears.



***Müse Applications Screen***

To launch a secondary application (TouchPro Patient Monitor or TouchPro CTG):

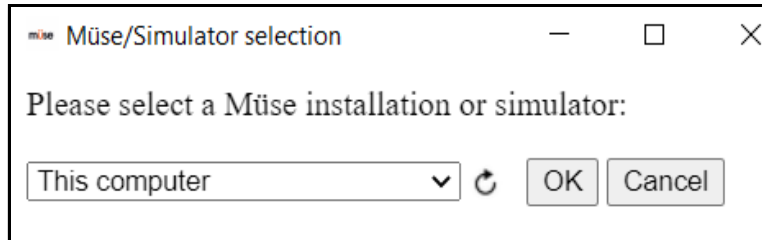
1. Navigate to the Müse Viewer Menu bar and from the drop-down menu, select **New Window**.

The Müse Applications screen appears.

To change installations:

1. Navigate to the **Tools** bar in the upper-left corner of the Application window and from the drop-down menu, select **Options**.

The Müse/Simulator Selection screen appears.



*Müse/Simulator Selection Window*

**Note:** Select the curved arrow to refresh the drop-down menu list. By default, this list is only populated with previously connected simulators.

2. Select a different installation from the drop-down menu and click **OK**.