

Install System Update

This guide includes procedures for installing system firmware or software updates on CAE patient simulator systems for Apollo, Lucina, Athena, Juno, Ares, and Aria.

Updates can be downloaded using any computer with an internet connection, but must be installed from your instructor workstation device. See *Step 1: Download the Update File* below for instructions on downloading and transferring files to your workstation.

Install System Update

Installation Steps	
1	Download the Update file
2a	Install the Update File via Surface Go Tablet
2b	Install the Update File via Samsung Tablet

Step 1: Download the Update File

To download the update file for your specific simulator platform:

- a. Open your Internet browser and navigate to:
<https://caehealthcare.com/support/software-updates>
- b. Follow the instructions for the appropriate tablet.
 - For Surface Go tablet, save the files onto a USB key and continue procedure in **Step 2a: Install the Update File via Surface Go Tablet**.
 - For Samsung Galaxy tablet, continue process in **Step 2b: Install the Update File via Samsung Tablet**.

Step 2a: Install the Update File via Surface Go Tablet

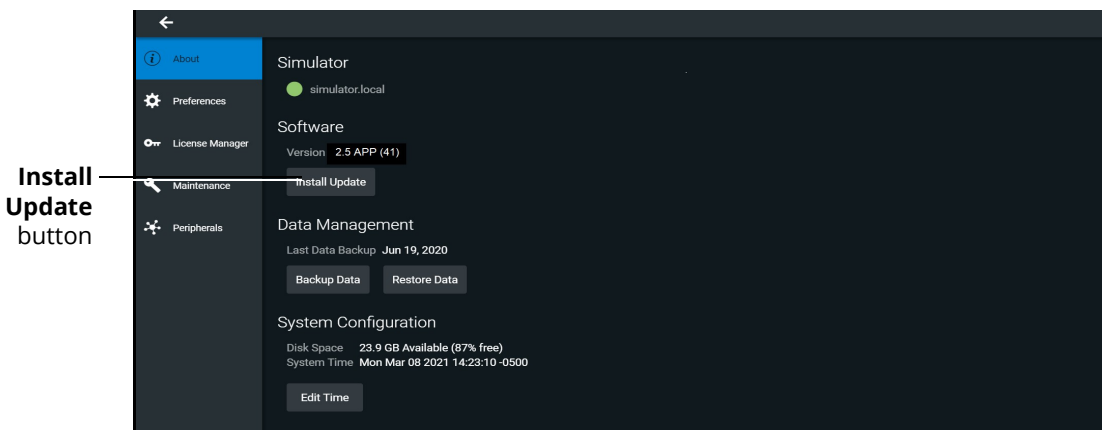
To install the update file via Surface Go tablet:

- a. Power on the instructor tablet.
- b. Connect the CAE-provided USB-C adapter into the USB-C port on the side of the tablet.
- c. Connect the USB key into the female end of the USB-C adapter.
- d. From the Desktop screen on the instructor tablet, navigate to the task bar and tap the Search icon in the lower-left corner of the screen.
- e. Tap the Keyboard icon in the lower-right corner of the taskbar to summon the on-screen keyboard and type "File Explorer."
- f. Tap X to close the keyboard.
- g. Tap on File Explorer app in the search result menu.
The File Explorer window appears.

Install System Update

- h. Under the **This PC** menu, tap the USB name to access the files from the USB key.
The USB contents appear in the main pane.
- i. Drag the desired update file to the Desktop screen.
- j. Use the **Safely Remove Hardware and Eject Media** icon in the System Tray to properly eject the USB key.
- k. From the desktop, tap the **CAE Maestro** shortcut icon to open CAE Maestro.
The CAE Maestro Home screen appears.
- l. From the CAE Maestro start screen, click on the **Gear** icon in the upper-right corner and select **System**.
- m. On the About screen, tap **Install Update** to open the File Explorer.

Note: The software version shown will match your simulator and may differ from the image below.



About Screen

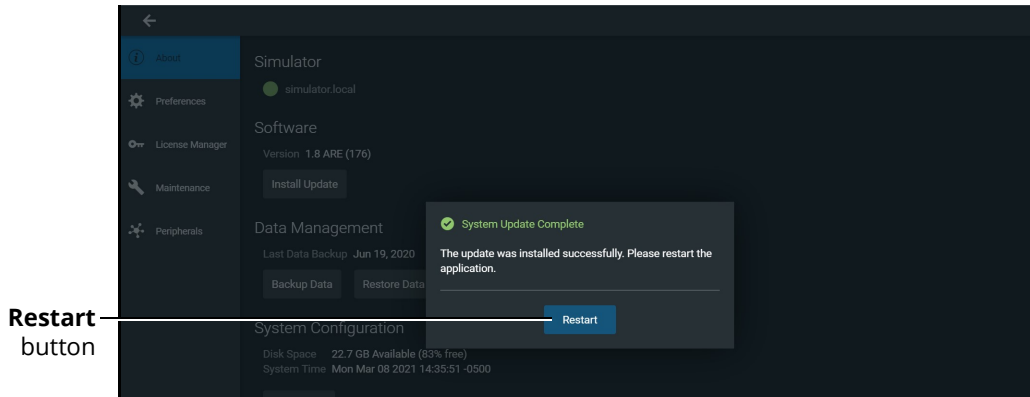
Install the Update File

To install the update file:

- a. In the File Explorer window, select the desired update file, which will have a file extension of either .msu or .swu, from the Desktop and tap **Open**.
- b. When the reminder to back up your files appears, do one of the following:
 - Tap **Cancel** to return to the previous window and back up your files before proceeding,
OR
 - Tap **Update** without backing up your files.

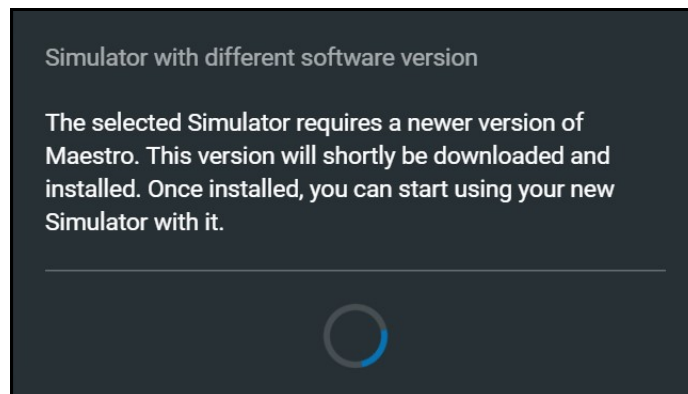
When the *System Update Complete* prompt appears, the simulator software update is complete and the software update for the instructor device remains.

- c. Select the **Restart** button to initiate the instructor device update.



System Update Complete Prompt

After Maestro restarts, the *Simulator with different software* prompt informs the user that the instructor device update is in progress.



Simulator with Different software Prompt

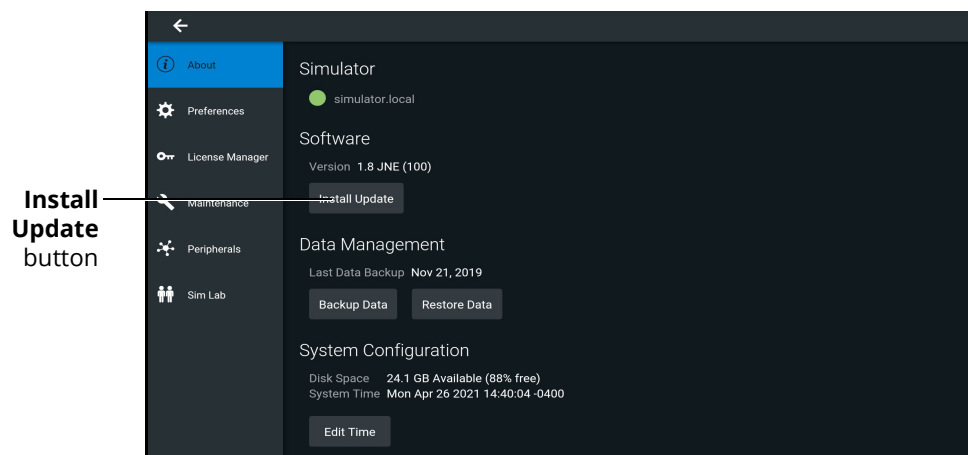
- d. Once the software update on the instructor workstation is complete, the software closes. From the desktop, tap the **CAE Maestro** icon.
- e. Upon the launching the Maestro software, the updated Applications screen appears.
- f. Tap **Maestro** icon to launch Maestro software.

Step 2b: Install the Update File via Samsung Tablet

To install the Maestro 2.9 update on a Samsung tablet:

- a. Power on the Samsung tablet and connect it to the Windows PC using the USB-C interface cable.
- b. On the tablet, when a message appears asking to allow access to device data, tap **Allow**.
- c. On the Windows PC, open Windows Explorer. Navigate to **Galaxy Tab S3 > Tablet > Download** folder.
- d. Move the desired update file from the PC to the tablet's Download folder.
- e. When files are transferred, disconnect the cable from PC.
- f. Power on the manikin and wait for it to say, "Hello."
- g. On the tablet, verify there is a WiFi connection. Then, tap the **Maestro** icon.
- h. Ensure the manikin is plugged into an outlet and the battery is charged to at least 35%.
- i. In the upper-right corner, tap the **Gear** icon and select **System** from the drop-down menu.
- j. On the About screen, tap **Install Update**.

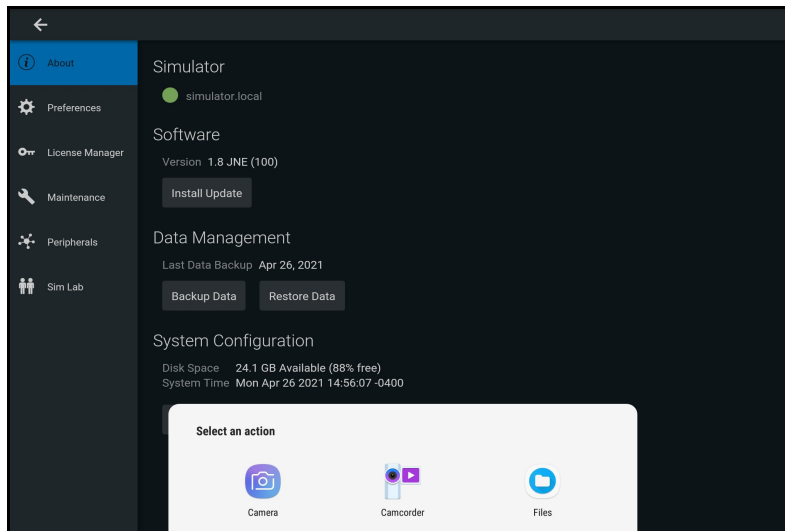
Note: The software version shown will match your simulator and may differ from the image below.



About Screen

- k. When the reminder to back-up your files appears, do one of the following:
 - Tap **Cancel** to return to the previous window and back up your files before proceeding,
 - OR
 - Tap **Update** without backing up your files.

- I. When a message prompts you to “Select an action,” tap either the **Files** or **Documents** icon.



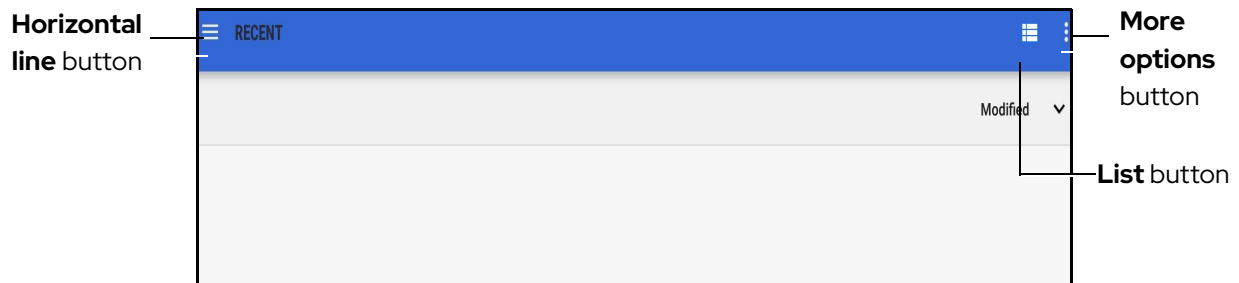
Select an Action Prompt

A new window opens allowing file access.

Install the Update File

To install the update file on your tablet:

- a. From the File Manager screen, tap the **List** button to switch to list view.



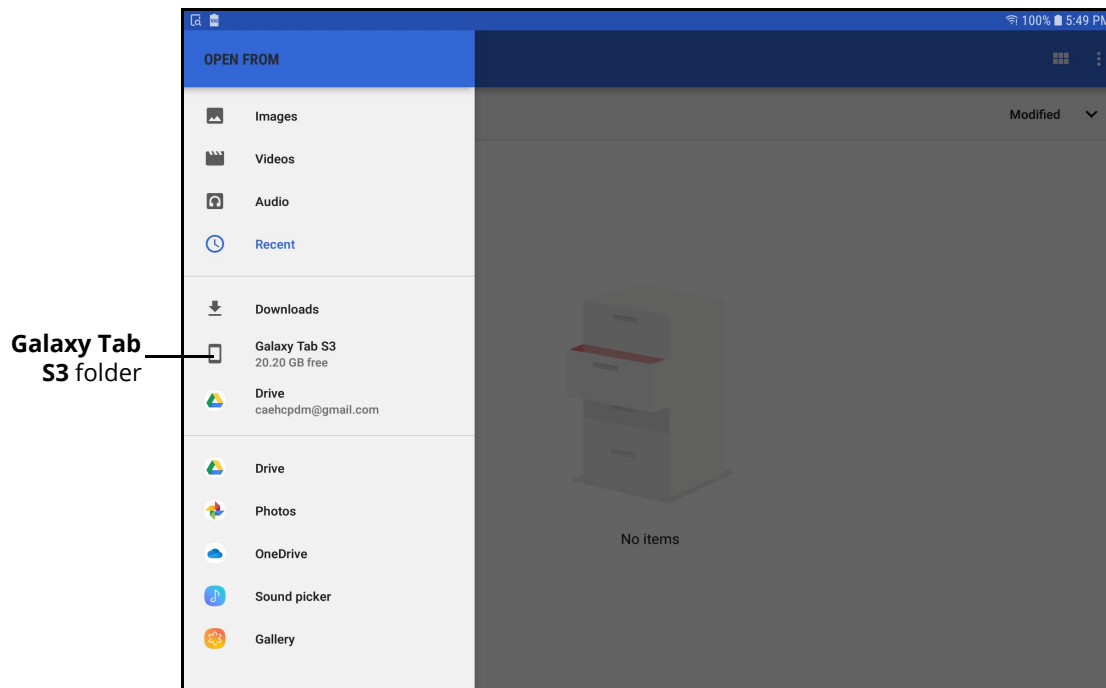
File Manager Screen

- b. Tap the **More options** button (three vertical dots) in the upper-right corner of the screen. On the pop-up menu, tap **Show Internal storage**.

Note: If a pop-up menu displays “Hide Internal Storage,” tap anywhere on the screen to close the menu.

Install System Update

- c. Tap the **Horizontal line** button in the top-left corner of the screen and from the left panel, select **Galaxy Tab S3**.



Galaxy Tab S3 Folder

- d. Locate and tap the Download folder.
- e. Tap on the desired update file, which will have a file extension of either .msu or .swu.

The update begins.

CAUTION: This may take a few minutes. Do not interrupt the update or power off the tablet.

- f. When the simulator says, "Hello," and the "Not connected to simulator. Please connect to a simulator via the Wi-Fi network" message appears, press the Home button on the tablet.
- g. Press the **Recent Apps** button located below the Home button on the tablet.
All running apps appear on screen.
- h. Tap **Close All**.

The Home screen appears.

Updating the Maestro App

Note: This section applies only to Maestro software updates. It is not applicable to firmware updates.

Prior to updating the Maestro app, check the Android software version on the Samsung device.

Check Android Version

To check the Android software version for the device:

- a. Swipe down from the top of the Home screen to display the Quick Settings menu and tap the **Gear** icon in the upper-right corner of the menu.
The Settings screen appears.
- b. Scroll to About Tablet and tap **About Tablet**.
The About Tablet screen appears.
- c. Tap **Software Information**.
- d. Check the Android version that appears in the Android version section.
- e. Complete the *Updating the Maestro App* instructions for that Android version.

Updating the Maestro App on Android 7

For Android 7 tablets, launch the Maestro app; the Permissions screen appears. To finish the install process, see Step i in the *Updating the Maestro App on Android 9* section and follow the remaining steps in that process.

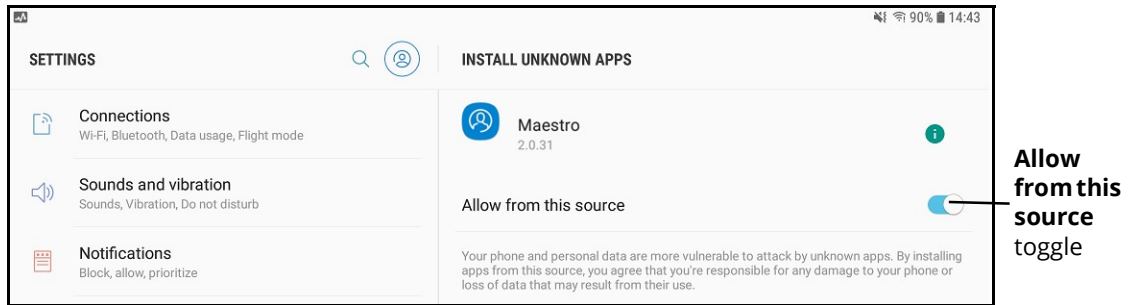
Updating the Maestro App on Android 8

To update the Maestro app on your Android 8 tablet:

- a. Launch the Maestro app. Wait while the software performs a version check.
Note: Depending on installed security updates, it may not be necessary to complete steps b through e.
- b. Eventually, a security message appears. Tap **Settings**.

Install System Update

The Settings screen appears.



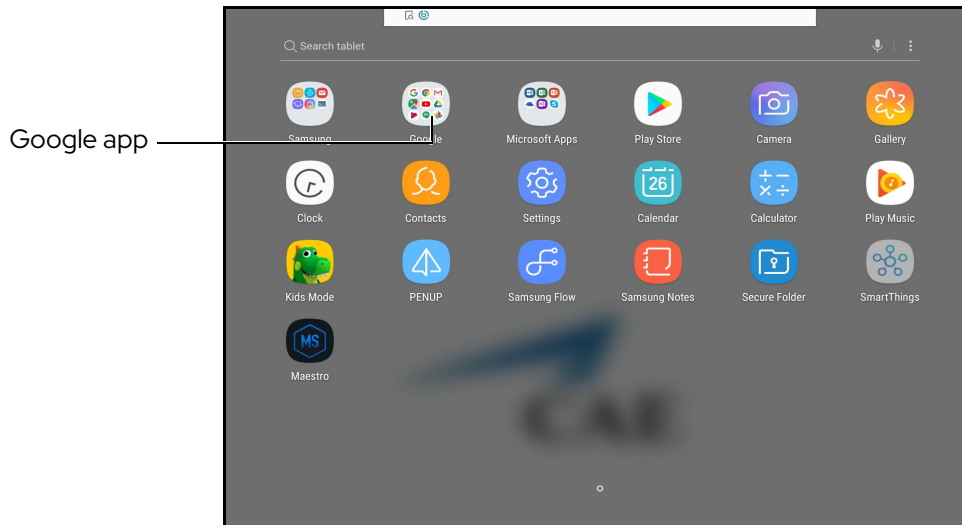
Settings Screen

- Slide the **Allow from this source** toggle to the right. and press the tablet's **Home** button.
- Swipe up from the bottom of the screen. Tap **Samsung > My Files > Recent Files**.
- Tap on the **maestro.apk** file.
- When a screen opens asking to install the app, tap **Install** in the bottom-right corner of the screen.
- When the screen appears indicating the app is installed, tap **Open** in the bottom-right corner of the screen.

Updating the Maestro App on Android 9

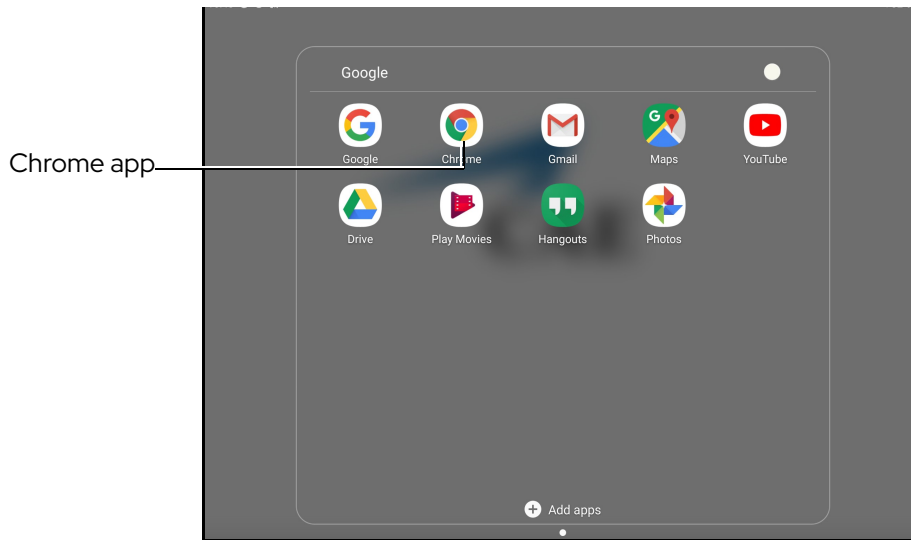
To update the Maestro app on your Android 9 tablet:

- From the Home screen, swipe up to access the Apps screen. Tap the Google app.



Apps Screen - Google App

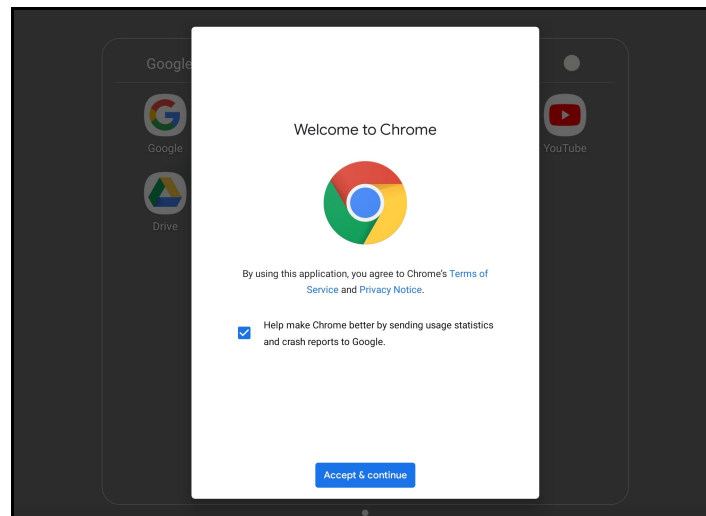
- b. From the Google folder, tap **Chrome**.



Google Folder - Chrome App

The Chrome welcome window appears.

- c. Tap **Accept and Continue**.

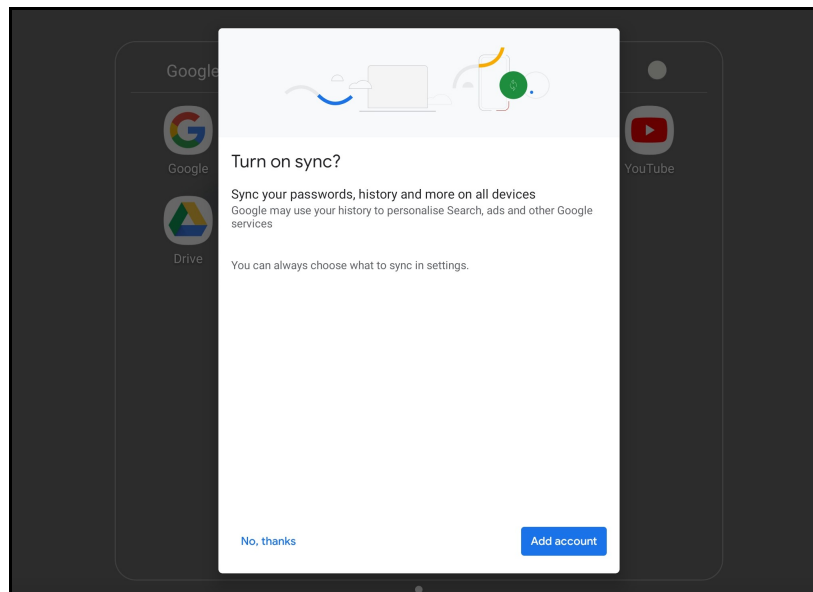


Chrome Welcome Window

The Turn on Sync? window appears.

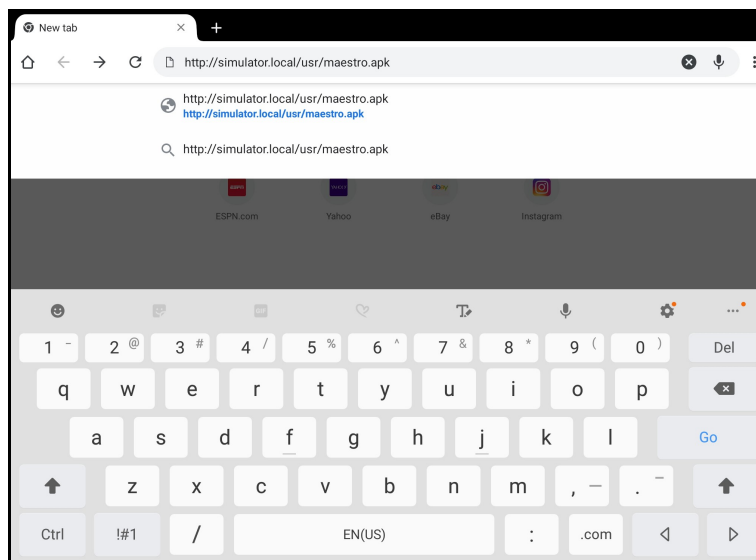
Install System Update

- d. Tap **No, thanks**.



Turn On Sync? Window

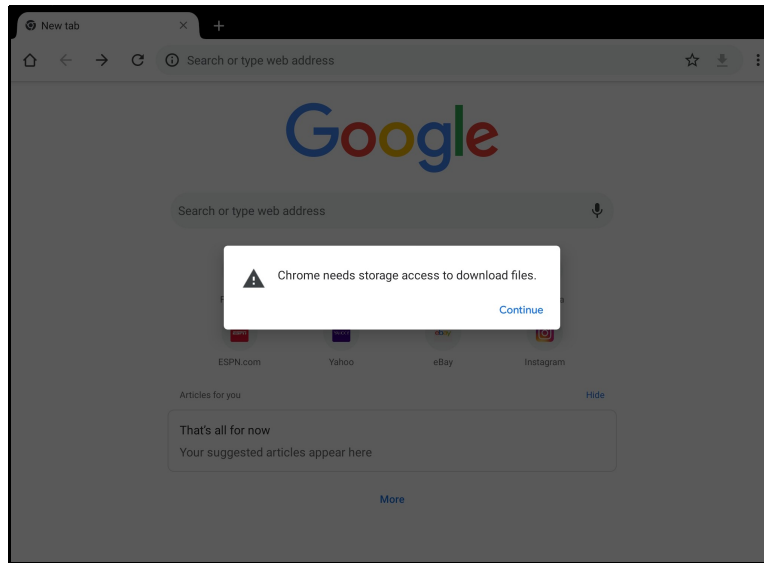
- e. Tap in the search or type web address bar. Type the following URL:
<http://simulator.local/usr/maestro.apk>
- f. Tap **Go** on the keyboard.



Type Web Address Bar

A pop-up permissions window appears to allow storage access to download files.

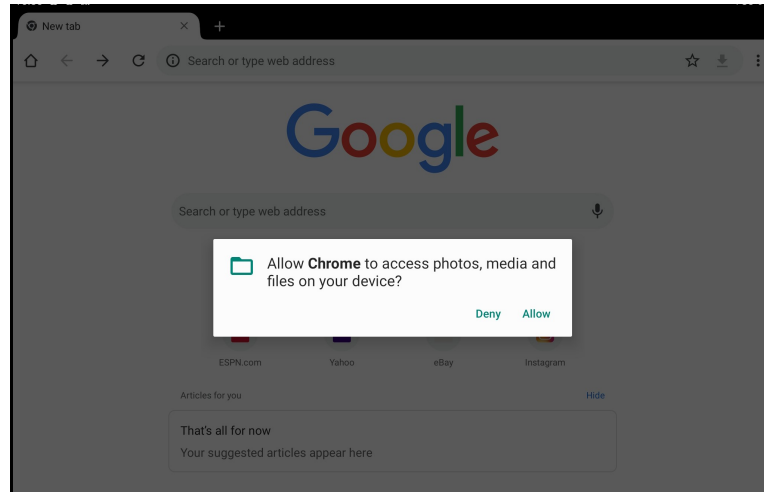
g. Tap **Continue**.



Permissions Pop-Up Window - Storage Access

Another pop-up permissions window appears to allow access to photos, media and files on your device.

h. Tap **Allow**.

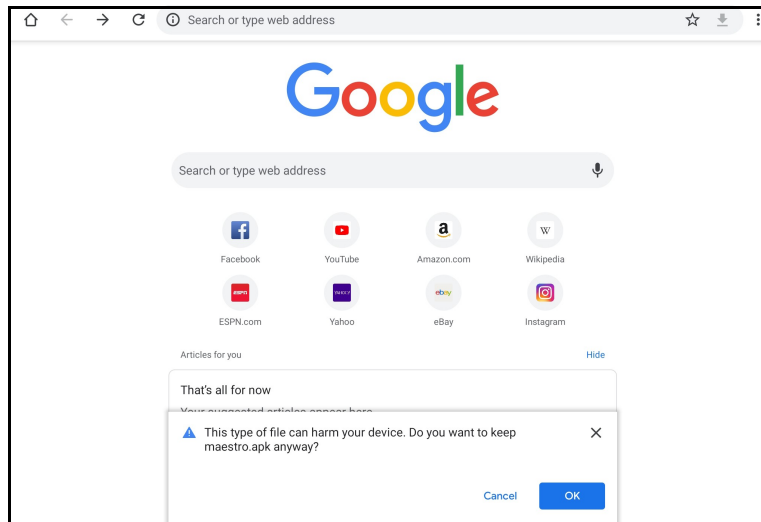


Permissions Pop-Up Window - Photos, Media and Files Access

A warning message appears asking if you want to keep the maestro .apk file.

Install System Update

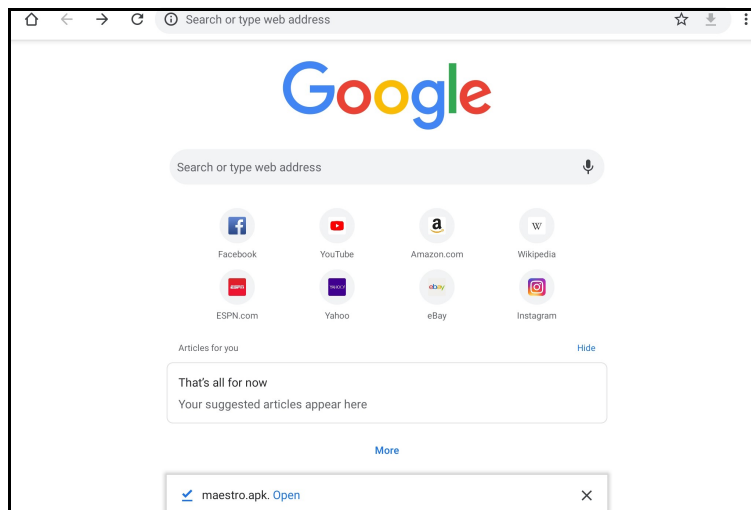
i. Tap **OK**.



Warning Message - Tap OK

A confirmation message appears showing a check mark and 'maestro.apk Open'.

j. Tap **Open** to start the update process.

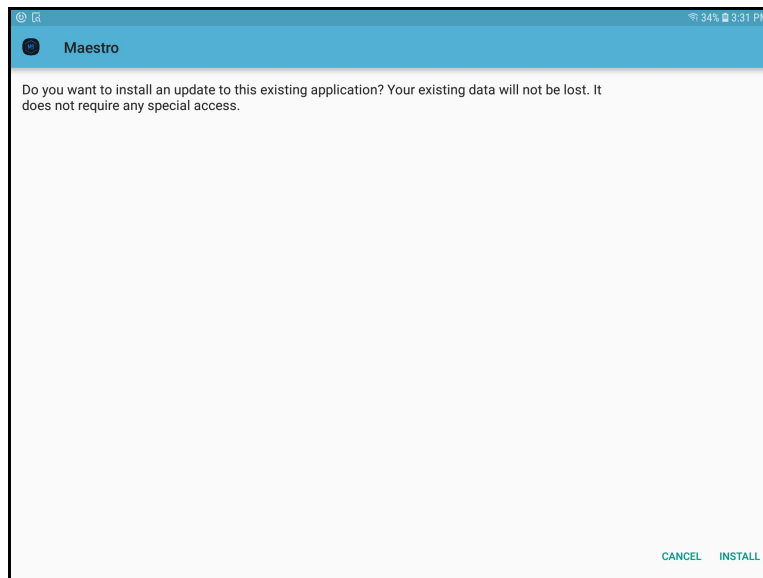


Confirmation Message - .apk file Open

A permissions window appears to install an app update.

k. Tap **Install** at the bottom-right corner of the screen.

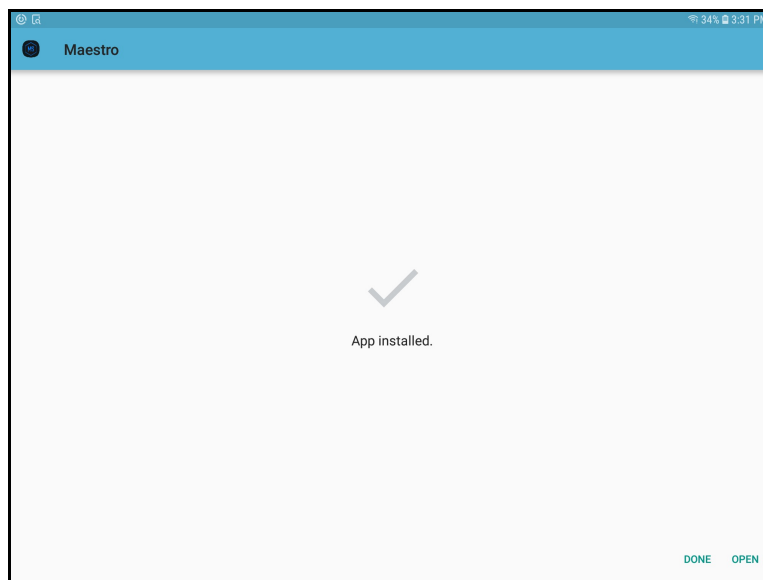
Note: It may take several seconds to install.



Permissions Window - App Update

When the installation is complete, an "App installed" success screen appears.

- I. Tap **Open** in the bottom-right corner of the screen to launch the Maestro app.



Success Screen - App Installed

Install the CAE Patient Monitor Update

Note: This section applies only to Maestro software updates. It is not applicable to firmware updates.

To update software for the Patient Monitor, the following software and hardware is required:

- One simulator updated with the most recent software
- Patient Monitor dedicated device

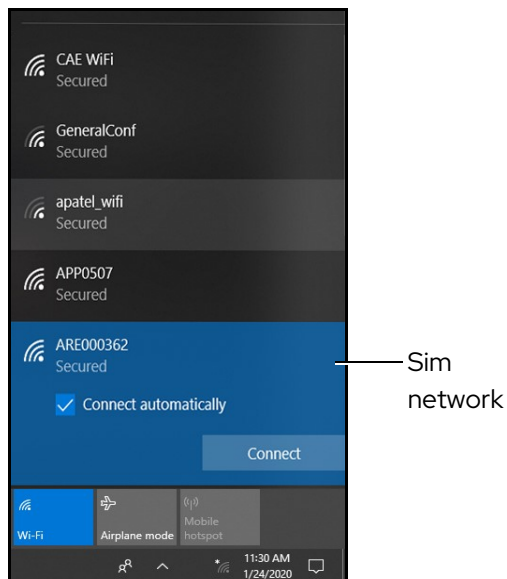
Prior to beginning, complete the steps outlined in the *Patient Monitor Getting Started Guide* provided with the Patient Monitor shipment.

Patient Monitor Update Steps	
1	Connect Patient Monitor to Network
2	Launch Patient Monitor

Step 1: Connect Patient Monitor to Network

To connect the Patient Monitor to the network:

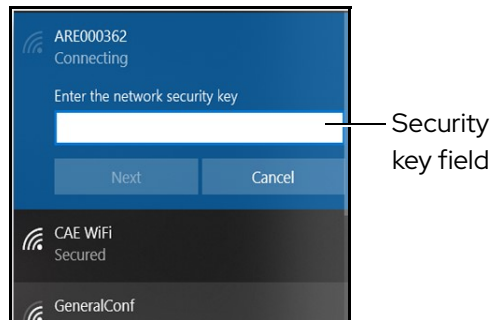
- Tap the **Network** icon in the Windows taskbar to expand the available networks list. Verify the simulator network is selected.
If the simulator network is not selected, tap on the appropriate network from the Available Networks list and proceed to step b.
- From the Available Networks list, tap the simulator network.



WiFi Connection - Sim Network

- Tap the **Connect Automatically** checkbox and then tap **Connect**.

The network security key prompt appears.



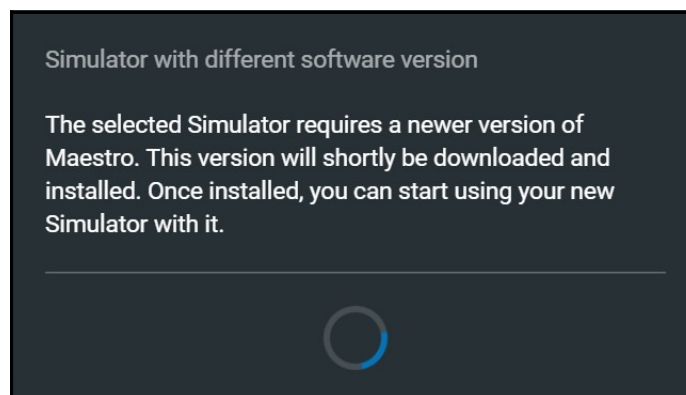
WiFi Connection - Network Security Key Prompt

- d. Tap in the Enter the security network key field and type *caeadmin* (for Microtik router, type *metiadmin*).
- e. Tap the **Show password** (eyeball) icon to the right of the field and confirm the password has been entered correctly.
- f. Tap **Next**.
- g. If the discoverable PC prompt appears, tap **Yes**.
- h. Wait a few moments while the Patient Monitor connects to the simulator network.

Step 2: Launch Patient Monitor

To launch CAE Patient Monitor:

- a. From the desktop screen, tap the **CAE PatientMonitor** icon.
Upon launch, the *Simulator with different software* prompt informs the user that the instructor device update is in progress.



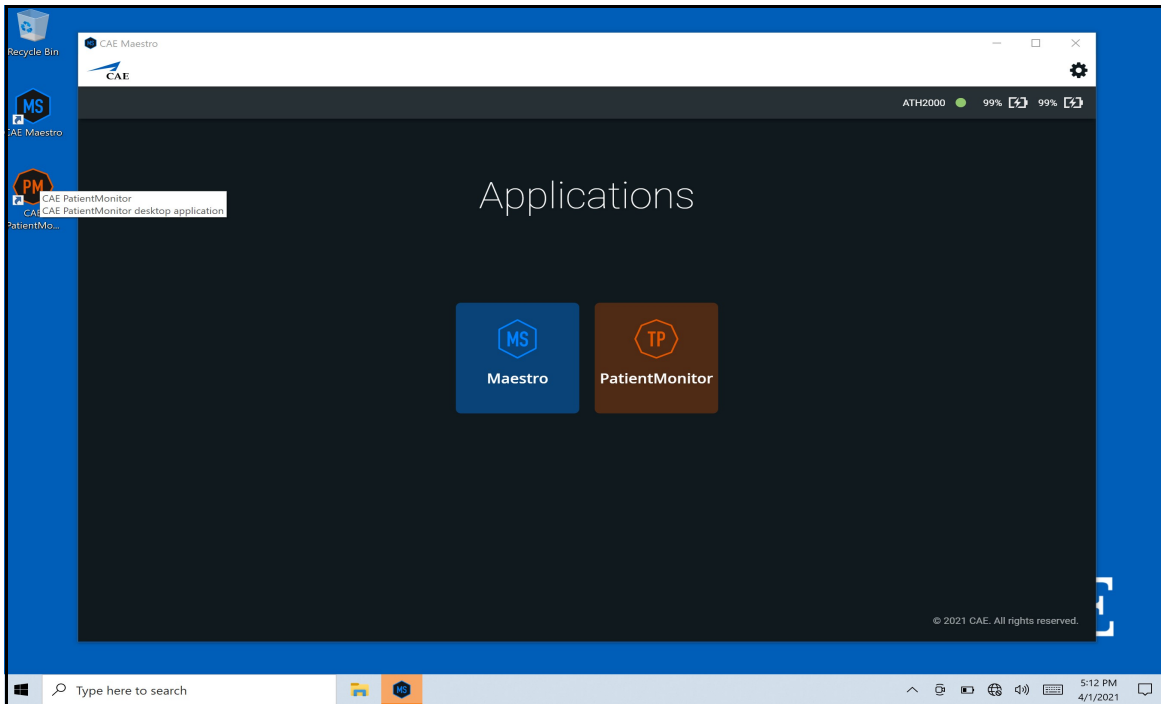
Simulator with Different software Prompt

After the update, the application will close and automatically restart Maestro.

- b. Exit out of the Maestro start screen.
- c. From the desktop, tap the **CAE PatientMonitor** icon.

Install System Update

- d. From the Applications screen, tap **PatientMonitor** to launch the patient monitor software.



Applications Screen