



Scrotal Ultrasound Training Model

BPS-800 Series

Instructions and User Guide

August 1, 2010 rev 1.0



Giving you the confidence only experience can offer™

Congratulations on your purchase of Blue Phantom's™ ultrasound model(s) for hands-on training. Every product we manufacture at Blue Phantom is specifically designed to be the most realistic and resilient ultrasound simulation phantoms available anywhere. Our high standards for quality manufacturing and design guarantee that you receive only the absolute best.

About Blue Phantom

Blue Phantom™ brings you the most realistic and durable ultrasound hands-on training models available anywhere. At Blue Phantom we know that learning to use ultrasound requires practice. You gain confidence and skill through experience. That is why we offer you the best ultrasound simulation training available.

Blue Phantom Warranty

Blue Phantom takes pride in its quality design and manufacturing standards. Our products are warranted to you by Blue Phantom for 1 year from the date of purchase against defects in workmanship and materials. During the warranty period, a defective part or product will be replaced either with a new or reconditioned part or product, depending on the availability at the time.

This warranty covers normal consumer usage and does not cover damage incurred through use not consistent with the product design. Failure that results from alteration, accident, misuse, vandalism, or neglect is not covered under this warranty. This warranty does not extend to any products that have been used in violation of written instructions.



Please read this instruction guide carefully. Do not begin using this model until you fully understand these safeguards and have read the user guide in its entirety

IMPORTANT SAFEGUARDS

1. Read Instructions – All safety and operating instructions should be read before the unit is operated.



2. While all parts of this user guide are important, the red flag that you see above denotes especially important content. Please familiarize yourself with all of the content prior to using your training model or damage to the model can occur.
3. Retain Instructions – The safety and operating instructions should be retained for future reference.
4. Heed Warnings – All warnings in the operating instructions should be adhered to.
5. Follow Instructions – All operating and maintenance instructions should be followed.
6. Accessories – Do not place this unit on an unstable cart, stand, tripod, bracket, or table. The unit may fall causing serious injury to a child or adult, and serious injury to the unit.
7. Care must be taken to not place the ultrasoundable components in direct contact with rough surfaces as the model can take on the surface characteristics of that surface.
8. Do not place objects on top of the scrotal ultrasound tissue insert. Placing heavy objects on top of the model can deform the tissue causing irreparable damage.
9. Training the user to properly position the penis during the performance of a scrotal ultrasound procedure is an integral part of procedural training. **It is extremely important that when the training is completed that the penis be returned to its original downward oriented position. NEVER keep the penis stored in any position other than the original downward position longer than 1 hour at a time or damage can occur.**
10. **NEVER aggressively position the penis and NEVER apply extreme force or pressure to the scrotum or penis or damage can occur.**



Scrotal Model Use and Care Instructions.

Model Series # BPS-801

Included in this Package

- Scrotal Ultrasound Training Model (BPS-801)
- Baby powder
- Carrying Case

Additional Items Required for Training not included in this package

- Ultrasound system with small parts transducer
- Ultrasound gel
- Standoff pad (optional)

Introduction to Your Training Model

This model is intended as a hands-on training platform for scrotal ultrasound hands-on training. The model is designed to be extremely realistic and contains the left and right testicles and corresponding epididymis, and pathology related to this anatomy. Additional anatomy assists in training of the procedure. In order to get the most out of your training platform, it is important that you properly care for your model.

Care Instructions

Anatomy of Your Training Model

Remove your training model from its shipping container and make sure that you have received all of the items listed in the “Included in this Package” above. If you did not receive one or more of the listed items, please contact Blue Phantom Customer Support immediately by calling (425) 881-8830 or emailing customersupport@bluephantom.com

Begin by familiarizing yourself with the anatomy of your training model.



The ultrasoundable components in your model are constructed using Blue Phantom’s patented ultrasound tissue and contain similar imaging characteristics to that of human tissue.

- Care must be taken to not place the ultrasoundable components in direct contact with rough surfaces as the model can take on the surface characteristics of that surface.
- Do not place objects on top of the scrotal ultrasound tissue insert. Placing heavy objects on top of the model can deform the tissue causing irreparable damage.
- Training the user to properly position the penis during the performance of a scrotal ultrasound procedure is an integral part of procedural training. **It is extremely important that when the training is completed that the penis be returned to its original downward oriented position. NEVER keep the penis stored in any position other than the original downward position longer than 1 hour at a time or damage can occur.**
- **NEVER aggressively position the penis and NEVER apply extreme force or pressure to the scrotum or penis or damage can occur.**

This ultrasound training platform contains two main components: an anatomical base and a scrotal ultrasound insert module (Image 1). The anatomical base contains a recess used for placing the scrotal ultrasound module. Under normal use, the ultrasound component should never have to be removed from the base platform.

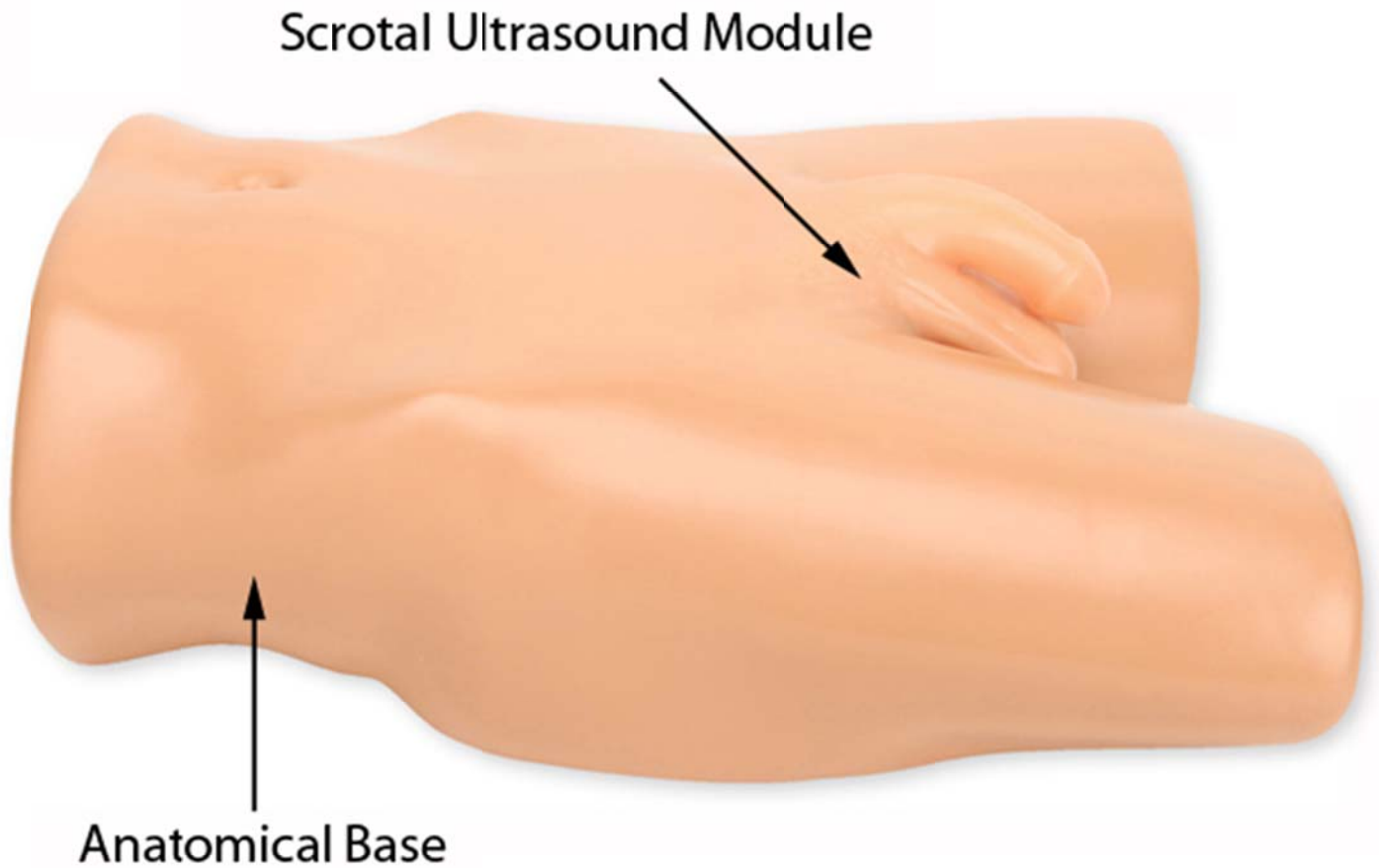


Image 1



The anatomical base platform can deform if it is placed in contact with heavy items. It should always be stored in its carrying case in the supine position (lying down on the buttocks) without any items stored on top of it.

The scrotal ultrasound module is constructed using Blue Phantom's ultrasound simulation tissue which maintains the imaging characteristics of the anatomy being simulated. The material is soft and pliable and care must be taken not to apply excessive force to the part, place any object on top of it for extended periods of time, or deform the anatomy in any way for extended periods of time or damage may occur

Using Your Training Model



1. **PRODUCT WEIGHT WARNING.** Be careful as the model is heavy. Use proper lifting techniques to prevent bodily injury.
2. Notify others as to the weight of the model to prevent others from being injured while moving or using the model.
3. Place the model in the proper orientation by positioning the simulated patient on a very stable patient bed. It is important that you place the model on a patient bed rated to handle an excess of 200 lbs (91 Kg).
4. Care must be taken to place the model in a position that it will not fall off of the bed and injure yourself or others.
5. Do not place this unit on an unstable cart, stand, tripod, bracket, or table. The unit may fall causing serious injury to a child or adult, and serious injury to the unit.
6. Place the model on a smooth surface as rough surfaces can leave indelible impressions where they contact the rough surfaces.
7. Do not use pens or other marking instruments on the model without testing them first on non obvious areas to make sure permanent staining does not occur.
8. Place ultrasound gel on the model or on the ultrasound transducer in adequate quantities so that the probe slides effortlessly across the surface of the model. Add more gel as necessary.
9. Adjust the ultrasound system controls per the manufacturer's instructions, increasing and decreasing the depth and gain controls until the desired image is obtained.

Performing a Scrotal Ultrasound Procedure

All of the soft tissue of the Scrotal Ultrasound training model is constructed using Blue Phantom ultrasound synthetic tissue. The model provides the user with similar sonographic imaging characteristics that you would expect in imaging a patient. The anatomy contained in the model includes:

- Penis (non-imaging)
- Left and right testes
- Left and right epididymis
- Pathology relating to these structures

Begin by placing the model on a sturdy imaging surface such as a patient gurney. Position the penis in a location so that it is out of the imaging field. Using a towel can help immobilize the penis out of the imaging field (Image 2).



Image 2



1. Positioning the penis out of the normal downward pointing position for time periods greater than 1 hour can cause deformation of the penis and should be avoided.
2. Never store the model with the penis in a position other than the downward pointing position (see Image 1).
3. Never apply excessive force to the scrotum or penis or damage to the model can occur.

Place a small rolled towel under the scrotum to elevate and immobilize the scrotum for imaging. Apply adequate amounts of ultrasound gel to the scrotum allowing the transducer to slide smoothly across the scrotum.

Cleaning and Storing Your Model

Proper care of your training model will result in years of utility.



1. Always store the model in the open or in the storage bag in the supine position.
2. Apply baby powder to the model on occasion in order to maintain a smooth silky feel.

Cleaning Your Model

The model is designed to offer you years of use. The model can be cleaned using a liquid soap/water mixture. Mix 1 part liquid soap with 1 part tap water. Gently rinse the model with this mixture to remove any accumulated dirt. Using a clean soft lint free cloth, dry using a dabbing motion rather than wiping the model as wiping the surface aggressively can result in scuffing the simulated tissue. After complete drying has been obtained, lightly coat the external surface of the model with baby powder. Heed all warnings on the baby powder container per manufacturer's recommendations. Lightly dust off excessive baby powder. This procedure should result in returning the model's skin surface to a smooth silky finish.

If you encounter any problems or have any questions regarding your model, please immediately contact Blue Phantom using the contact information provided in this user guide.

Storage

Always store the model in the open or in the storage bag in the supine position.

Blue Phantom Warranty

Blue Phantom takes pride in its quality design and manufacturing standards. Our products are warranted to you by Blue Phantom for 1 year from the date of purchase against defects in workmanship and materials. During the warranty period, a defective part or product will be replaced either with a new or reconditioned part or product, depending on the availability at the time of placement.

This warranty covers normal consumer usage and does not cover damage incurred through use not consistent with the product design. Failure that results from alteration, accident, misuse, vandalism, or neglect is not covered under this warranty. This warranty does not extend to any products that have been used in violation of written instructions.

Help and Technical Assistance

Blue Phantom is committed to providing you with superb products and uncompromising customer support. Should you require assistance feel free to contact us directly at (425) 881-8830 or customersupport@bluephantom.com.